



# COMUNE DI CASCINETTE D'IVREA

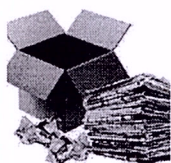
CITTÀ METROPOLITANA DI TORINO

## GUIDE TO SEPARATING WASTE CORRECTLY



**ORGANIC:** Food leftovers, cooking waste, spoiled food, egg and seafood shells, spoiled vegetables and fruit, small bones, coffee grounds, tea and camomile bags, extinguished ash, domestic flowers and plants.

- 1) Use a biodegradable bag made of biodegradable material;
- 2) Close the bag well and place it in the bin for organic material;
- 3) Empty the bucket into the special brown external condominium container;
- 4) Never place organic waste bags for collection directly on the ground or in the street;
- 5) Do not insert waste that cannot be recycled (dry) or paper or plastic.



**PAPER:** Newspapers, magazines, books, photographs, notebook, large boxes, paper bags, milk and wine cartons, fruit juice cartons, greaseproof paper, empty medicine boxes and boxes in general, photographs, slightly soiled paper napkins, pizza boxes.

- 1) The paper must be conferred inside the yellow condominium container;
- 2) Do not insert sandpaper, carbon paper, chemical paper, waxed paper, paper used to wrap cold cuts, or plasticised paper for magazine covers;
- 3) Do not insert waste that cannot be recycled (dry) or plastic or organic waste.



**INDIFFERENTIAL WASTE - DRY:** Vacuum cleaner bags, small toys, waxed or plasticised paper (magazine covers, and cold cut wrappings), plastic forks and knives, disposable razors, audio and video cassettes, CDs, DVDs, floppy discs, nappies and sanitary pads, syringes with needle cover, pet litter, coffee pods, combs and brushes, glue sticks and adhesives, gloves for kitchen and general use, plasticised cards, adhesive tape, writing materials in general, dirty cloths, fake flowers, ceramic plates, X-rays.



- 1) Use a normal shopping bag;
- 2) Give the bag of mixed waste to the orange condominium container;
- 3) Don not insert paper or plastic or organic waste.



**PLASTIC AND CANS:**

Water and soft drink bottles, plastic bottle caps, lids on jars containing jam/marmalade-pickles-food under oil etc., soap and detergent bottles, food containers (for sauces and glazes -mayonnaise etc.), plastic bags of shoppers, nylon bags, toothpaste tubes, bags for frozen food, cellophane, fruit containers, yoghurt pots, plastic plates and glasses, fruit nets, aluminium foil, tin cans, steel tins e.g. tuna tins, plastic coat hangers, trays for raw meat cuts – for vegetables and eggs, polystyrene (not for construction), flower pots, plastic trays, bags that contain crisps and snacks, plastic wrap, transparent blisters, plastic round packs of 6 bottles, coffee pods.

- 1) Plastic and tins go inside the blue bell, placed near the ecological area;
- 2) Do not insert spray cans, work and kitchen tools, toys;
- 3) Do not insert waste that cannot be recycled (dry) or paper or organic waste;
- 4) Do not leave plastic and cans outside the plastic bell.



**GLASS:**

Bottles, vases and jars made only of glass.

- 1) Do not leave glass outside the bottle banks;
- 2) Do not insert pottery or porcelain. Caps are generally eliminated with plastic waste;
- 3) Do not insert CRYSTAL glasses and objects because they contain lead;
- 4) Do not insert waste that cannot be recycled (dry) or paper or organic waste.

**The area involved by the provision will be adaptably supervised and controlled to contrast the bad behaviors.**

**For non-compliance booking procedures, the penalties provided for by the law will be applied to the offenders.**

There, 16 October 2019

**The Mayor of Cascinette d'Ivrea**

**Piero OSENGA**

